

Effects of *Lycium barbarum* on bacterial translocation in thioacetamide-induced liver injury in rats

European Journal of Inflammation
2015, Vol. 13(3) 154–163
© The Author(s) 2015
Reprints and permissions:
sagepub.co.uk/journalsPermissions.nav
DOI: 10.1177/1721727X15618413
eji.sagepub.com


Y Bilgic,¹ MMM Harputluoglu,¹ O Kutlu,² U Demirel,³ M Gul,⁴
B Otlu,⁵ I Temel,⁶ S Gursoy,⁶ R Dertli,² EB Selcuk,⁷ I Yilmaz⁸
and T Kilis⁹

Abstract

Background and study aim: The aim of the present study was to investigate the effects of *Lycium barbarum* (LB) on bacterial translocation (BT) frequency in thioacetamide (TAA)-induced liver injury in rats.

Materials and methods: Group 1 was the control. In group 2 (TAA), rats received TAA daily for 3 days. In group 3 (TAA+LB), *Lycium barbarum* was administered orally 25 mg/kg for 21 days prior to the first TAA injection. In group 4 (LB), rats received only *Lycium barbarum*.

Results: In our study, *Lycium barbarum* treatment did not attenuate liver damage. *Lycium barbarum* treatment decreased ileal *E. coli* counts and intestinal damage but it did not alter BT frequency.

Conclusions: In conclusion, the effects of *Lycium barbarum* on BT may be related to ongoing severe liver damage in this model.

Keywords

bacterial translocation, liver injury, *Lycium barbarum*, thioacetamide

Date received: 7 May 2014; accepted: 28 October 2015

Introduction

Bacterial translocation (BT) is defined as the migration of bacteria or bacterial products from the gut to the extra-intestinal space.¹ The liver plays a central role for prevention of translocation of gut-derived microbial products to the systemic circulation by cleansing and detoxifying microbial products.^{2,3} It is well known that bacterial translocation is closely associated with the development of complications in many liver diseases. Intestinal bacterial overgrowth (IBO), increased permeability of intestinal mucosa, and impaired immunity may favor BT.⁴

The fruit of *Lycium barbarum* (Solanaceae), also called goji berry or wolfberry, is a well-known traditional Chinese medicine as well as valuable nourishing tonic, which has been used for more than 2300 years in East Asia.^{5,6} Many studies on

¹Department of Gastroenterology, Inonu University Medical Faculty, Malatya, Turkey

²Department of Internal Medicine, Inonu University Medical Faculty, Malatya, Turkey

³Department of Gastroenterology, Firat University Medical Faculty, Elazig, Turkey

⁴Department of Histology and Embryology, Inonu University Medical Faculty, Malatya, Turkey

⁵Department of Microbiology, Inonu University Medical Faculty, Malatya, Turkey

⁶Department of Biochemistry, Inonu University Medical Faculty, Malatya, Turkey

⁷Department of Family Medicine, Inonu University Medical Faculty, Malatya, Turkey

⁸Department of Pharmacology, Inonu University Pharmacy Faculty, Malatya, Turkey

⁹Department of Biochemistry, Inonu University Pharmacy Faculty, Malatya, Turkey

Corresponding author:

Murat MM Harputluoglu, Professor, Department of Gastroenterology, Inonu University Medical Faculty, Malatya/Turkey.
Email: mharputluoglu@hotmail.com

pharmacology and phytochemistry have demonstrated that *Lycium barbarum* polysaccharides (LBP) had various bioactivities, such as antioxidant,^{7,8} immunomodulation,^{9–12} and hepatoprotection.¹³ No study to date has reported the effects of *Lycium barbarum* on BT in thioacetamide (TAA)-induced liver injury in rats. The aim of the present study was to investigate the effects of *Lycium barbarum* on BT frequency in TAA-induced liver injury in rats.

Materials and methods

Animals

Healthy male Wistar rats weighing 250–300 g were used in this study. Animals were housed on a 12-h light/dark cycle (lights on from 08:00 h) at a constant ambient temperature (24±1°C) with normal rat chow and water available *ad libitum*. The study protocol was in accordance with the guidelines for animal research and was approved by Ethics Committee of Animal Experimentation at the Medical Faculty of Inonu University.

Induction of liver injury

Liver injury was induced by intraperitoneal (ip) injection of 350 mg/kg/day TAA (Merck, Germany) for 3 days as previously described.¹⁴ Supportive therapy of subcutaneous administration of 5% dextrose (25 mL/kg) and 0.9% NaCl with potassium (20 mEq/L) every 6 h was given to avoid weight loss, hypoglycemia, and renal failure, as previously described.¹⁴

The preparation of *Lycium barbarum* extract

The extraction of *Lycium barbarum* was performed as previously described with modifications.¹⁵ Briefly, 250 mg of fine *Lycium barbarum* powder was extracted four times with 2.5 mL of methanol by sonication at room temperature for 15 min, followed by centrifugation for 5 min; the same extraction procedure was carried out with methanol/water (1:1), ethanol (100%), and water.¹⁶

Experimental design

A total of 28 male rats were divided into four groups. Group 1 (n = 7) was the control group, which received 0.1 mL/day 0.9% NaCl ip for 3 days. Group

2 (n = 7) was the TAA group, in which rats received 350 mg/kg/day TAA ip for 3 days at intervals of 24 h. Group 3 (n = 7) was the TAA+LB group. *Lycium barbarum* extract was started at 25 mg/kg/day orally by gastric gavage 21 days previously from the first dose of 350 mg/kg/day TAA ip for 3 days. It has been reported that 25 mg/kg *Lycium barbarum* orally for 21 days shows antioxidative activity on doxorubicin-induced cardiotoxicity in rats.¹⁷ Thus, the dose and treatment duration were chosen according to that study. Group 4 (n = 7) was the LB group, in which rats received only *Lycium barbarum* at 25 mg/kg/day orally for 21 days.

Tissue samples

On day 24 of the study, laparotomy was performed under anesthesia with 50 mg/kg ketamine (Ketalar, Parke-Davis, Eczacibasi, Turkey) and 10 mg/kg xylazine HCl (Alfazyne 2%; Alfasan, Woerden, the Netherlands) under strictly sterile conditions. After the skin was sterilized with iodine and shaved, the abdomen was opened wide. The mesenteric lymph nodes (MLNs) from the ileocecal area and the spleen were aseptically dissected, removed, weighed, and liquefied in sterile saline for bacterial culture. The liver was aseptically dissected and the left lobe was used for bacterial cultures. The other lobes of liver was excised for histopathological and biochemical analyses including measurement of thiobarbituric-acid-reactive substances (TBARS) and reduced glutathione (GSH) levels. The ileum was also excised for histopathological and biochemical analyses including measurement of TBARS and GSH levels. We aspirated 0.1 mL ileal fluid with a sterile needle for assessment of IBO. Blood was taken from the right ventricle for biochemical determinations (ammonia, aspartate transaminase [AST], and alanine transaminase [ALT]).

Liver histology

Midsections of the liver were processed for light microscopy. This processing consisted of fixing the specimen in 5% neutral formol solution, embedding the specimens in paraffin, slicing sections of 5 µm thickness, and staining the sections with hematoxylin and eosin. The tissue slices were scanned and scored by an experienced histologist who were not aware of sample assignment to experimental groups. The degree of inflammation

and necrosis was expressed as the mean of 10 different fields within each slide, classified on a scale of 0 to 3 (0, normal; 1, mild; 2, moderate; and 3, severe).¹⁴

Intestine histology

The ileum samples taken from the rats were fixed for 24 h in 5% neutral formol solution. Samples were divided into pieces of $0.5 \times 0.5 \times 0.5$ cm³ and were processed for routine examination. These samples from each animal were obtained in separate blocks. Sections of samples were cut at 6–7 μ m, mounted on slides, stained with hematoxylin and eosin (H&E) and examined by a Leica DFC280 light microscope and Leica Q Win Image Analyses System (Leica Microsystems Imaging Solutions, Cambridge, UK). The tissue slices were scanned and scored by two expert pathologists, who were unaware of the sample assignment to an experimental group. A scoring system in the range of 0–3 (0, normal; 1, mild; 2, moderate; 3, severe) was used for intestinal histopathological evaluations. Mucosal integrity, edema, inflammatory cellular infiltration of the lamina propria, and vessel vasodilation were scored accordingly.¹⁸

Biochemical analysis

Blood samples of approximately 4 mL were taken from each rat. A 1-mL aliquot from each blood sample was transferred to centrifuge tubes that contained 1 mL 10% TCA for deproteinization, and centrifuged at 3000 *g* for 10 min following mixing. The clear supernatant at the top of the tube was used for ammonia analysis. The remaining 3 mL of each blood sample was used for separation of serum following transfer into marked centrifuge tubes. These samples were kept at room temperature for 30 min and centrifuged at 3000 *g* for 10 min. Serum samples obtained in this way were aliquoted for use in biochemical analysis and were stored at -20°C until analysis.

Blood ammonia analysis

Blood levels of ammonia were analyzed using the colorimetric Berthelot (indophenol) reaction.¹⁹ In this reaction, free ammonia in previously deproteinized samples generates a blue-colored indophenol molecule by reacting with sodium nitroprusside in an alkaline environment that contains phenol

and hypochlorite ions. The color intensity of the chromogen, spectrophotometrically measured against blank samples at 625 nm, increases in direct proportion to the concentration of ammonia. $(\text{NH}_4)_2\text{SO}_4$ was used as a standard. Results are expressed in μg ammonia nitrogen/dl.

Serum AST and ALT levels

Serum levels of AST and ALT were measured using a kinetic UV method defined by the International Federation of Clinical Chemistry (IFCC) using pyridoxal phosphate and NADH as co-factors. An Olympus auto-analyzer and commercial kits of the same brand were used for two analyses in the routine biochemistry laboratories of Turgut Ozal Medical Center. AST and ALT levels were expressed as U/L.

Determination of lipid peroxidation

TBARS and other products of lipid peroxidation considered to be indicators of oxidative stress were analyzed using the method described by Buege and Aust.²⁰ Briefly, 250 μL of tissue homogenate, 500 μL of thiobarbituric acid (TBA) reactant (3.7 g/L TBA dissolved in 0.25 mol/L HCl), and 1.5 mL of 15% trichloroacetic acid were added to screw-topped Pyrex centrifuge tubes (~ 10 mL) and mixed. The tubes were placed in a hot water bath at 95°C for 30 min and then immediately cooled under tap water. *n*-Butanol (3 mL) was added to each tube and mixed so that the pink chromogen separated into the butanol phase. The absorbance of the colored organic phase was read against a blank at 535 nm. 1,1,3,3-Tetramethoxypropane was used to prepare a calibration curve from which the serum and tissue levels of TBARS were calculated. Tissue levels were expressed as nmol/g wet tissue.

GSH assay

GSH was measured in the tissue homogenates using the method described by Ellman.²¹ A total of 250 mL of 10% trichloroacetic acid was added to 250 mL of tissue homogenate containing 6mM disodium EDTA. The mixture was vortexed vigorously for 2 min, followed by centrifugation at 3000 *g* for 10 min. An aliquot (0.2 mL) of the supernatant was mixed with 1.7 mL of 0.1 M potassium phosphate buffer (pH 7.5), and 0.1 mL of 1 mM Ellman's

reagent (5,5'-dithio-bis-[2-nitrobenzoic acid]) was added to each tube. After a 5 min incubation at room temperature, the optical density was measured spectrophotometrically at 412 nm against a reagent blank. The results were expressed as mmol/g wet tissue.

BT and IBO

BT was defined as positive bacterial cultures from MLN, liver, or spleen samples. From each animal group, 1 g tissue samples (liver, spleen, and MLN) were homogenized in 1 mL saline. This homogenized solution was then inoculated onto blood agar, eosin methylene blue (EMB) agar, and Sabouraud agar, and incubated at 37°C for 24 h. On the following day, the bacterial growth was checked and the colonies were counted. Gram staining was carried out for each colony. According to the Gram stain results, specific biochemical tests, including those for catalase, oxidase, coagulase, indole, citrate reduction, urease, and sugar fermentation on triple sugar iron agar, were carried out for primary identification of the isolated bacteria. An Api 20 E test (bioMérieux, Marcy L'Etoile, France) was used to confirm the identification. To grow yeasts, the Remel RapID™ Yeast Plus System 8311007 (Remel Inc., Lenex, KS, USA) was used.

IBO of a specific organism was defined as a bacterial count in the ileal aspirate higher than the mean + 2 SD for the same organism in normal rats. The ileal aspirate (0.1 mL) was inoculated onto blood agar, EMB agar, and Sabouraud agar and incubated at 37°C for 24 h. The bacterial growth was checked on the following day and the colonies counted. Colony counts for ileal aspirates are presented as $\times 10^3$ CFU/mL ileal aspirate (median and range).²²

Statistical analyses

Results are expressed as mean \pm SD. Comparisons of quantitative variables among groups were made with the one-way ANOVA or the corresponding non-parametric test (Kruskal–Wallis), as required. Post-hoc comparisons were performed with the least significant difference test. Proportion comparisons were carried out using the χ^2 or Fisher test. For all comparisons, a statistically significant difference was defined as $P < 0.05$.

Results

Survival rates

The survival rates in the TAA (85.7%) and the TAA+LB groups (71.4%) were lower than in the control and LB group on the day of sacrifice. There was no statistically significant difference between groups.

Serum ammonia, AST, and ALT levels

Table 1 shows the mean + SD values for serum ammonia, AST, and ALT levels. Serum ammonia, AST, and ALT levels in the TAA group were significantly higher than in the control and LB groups (all $P < 0.001$). Serum ALT levels in the TAA + LB group were only significantly higher than in the TAA group ($P < 0.05$). Serum ammonia and AST levels were not significantly different between TAA and TAA + LB.

Oxidative stress results

Table 2 shows the mean + SD values of liver and intestine TBARS and GSH levels in the groups. Liver TBARS levels in the TAA group were significantly higher than in the control group ($P < 0.01$). Liver TBARS levels in the TAA + LB group were significantly lower than in the TAA group ($P < 0.01$). Liver GSH levels in the TAA group were lower than in the control group ($P < 0.05$). Liver GSH levels in the TAA + LB group were higher than in the TAA group but the difference was not significant.

Intestine TBARS levels in the TAA group were higher than in the control group but difference was not significant. Intestine TBARS levels in the TAA+LB group were significantly lower than in the TAA group ($P < 0.05$). Intestine GSH levels in the TAA group were significantly lower than in the control group ($P < 0.05$). There was no significant difference between TAA and TAA+LB groups for intestine GSH levels.

Results of liver histology

Table 3 shows mean \pm SD values for hepatic necrosis and inflammation scores, which were significantly higher in the TAA group than in the control group (both $P < 0.001$, Figure 1b). There was no significant difference between the TAA and TAA+LB groups for these parameters (Figure 1c).

Table 1. Mean + SD values of serum ammonia, AST, and ALT levels of the groups.

| Groups | Ammonia* | AST (U/L) | ALT (U/L) |
|------------------|------------------------------|-------------------------------|--------------------------------|
| Control (n = 7) | 173.00 ± 24.01 | 95.20 ± 26.75 | 63 ± 15.35 |
| TAA (n = 6) | 448.50 ± 147.14 [†] | 2045.83 ± 1012.1 [†] | 1995.33 ± 577.40 [†] |
| TAA+Goji (n = 5) | 297.83 ± 73.50 | 3973.60 ± 2863.55 | 4227.60 ± 2227.01 [‡] |
| Goji (n = 7) | 161.02 ± 12.24 | 111.50 ± 19.09 | 67 ± 12.73 |

*Ammonia was expressed in µg ammonia nitrogen/dL.

[†]P <0.001 compared with the control and Goji groups.

[‡]P <0.05 compared with the TAA group.

Table 2. Mean + SD values of liver and intestine TBARS (nmol/g wet tissue) and GSH (mmol/g wet tissue) levels in the groups.

| Groups | Liver TBARS | Intestine TBARS | Liver GSH | Intestine GSH |
|------------------|---------------------------|----------------------------|--------------------------------|------------------------------|
| Control (n = 7) | 72.12 ± 12.76 | 36.55 ± 6.60 | 7091.82 ± 2313.91 | 816.21 ± 410.66 |
| TAA (n = 6) | 110.87 ± 8.23* | 40.07 ± 5.88 | 3760.32 ± 1483.52 [†] | 278.92 ± 114.00 [†] |
| TAA+Goji (n = 5) | 67.84 ± 7.65 [‡] | 30.25 ± 23.64 [§] | 4278.88 ± 1365.56 | 481.08 ± 328.91 |
| Goji (n = 7) | 54.75 ± 4.08 | 28.40 ± 2.91 | 7524.20 ± 6115.48 | 1897.28 ± 1031.98 |

*P <0.01 compared with the control group.

[†]P <0.05 compared with the control group.

[‡]P <0.01 compared with the TAA group.

[§]P <0.05 compared with the TAA group.

Table 3. Mean ±SD values for hepatic necrosis and inflammation scores.

| Groups | Necrosis | Inflammation |
|------------------|--------------|--------------|
| Control (n = 7) | 0.00 ± 0.00 | 0.00 ± 0.00 |
| TAA (n = 6) | 3.00 ± 0.32* | 3.00 ± 0.43* |
| TAA+Goji (n = 5) | 3.00 ± 0.29 | 2.80 ± 0.45 |
| Goji (n = 7) | 0.00 ± 0.00 | 0.00 ± 0.00 |

*P <0.001 compared with the control group.

Results of intestine histology

Intestinal damage scores in the TAA group were significantly higher than in the control group ($P < 0.0001$, Figure 2b). These scores in the TAA + LB group were significantly lower than in the TAA group ($P < 0.001$, Figure 2c, Table 4).

IBO and BT

Counts of *Escherichia coli* grown in ileal aspirate were significantly higher in the TAA group than in the controls ($P < 0.01$). Counts of *E. coli* grown in ileal aspirate were significantly lower in the TAA+LB group than the TAA group ($P < 0.05$) (Table 5). BT frequency in the TAA group was significantly higher than in the control group (χ^2 test, $P < 0.05$). BT frequency in the TAA+ LB group was lower than in the TAA group but difference

was not significant (Table 5). In all groups, the bacterial species translocated to MLNs, spleen, and liver was *E. coli*.

Discussion

In this study, TAA led to severe liver damage (Figure 1b). We found that liver enzymes (AST and ALT) and ammonia levels significantly increased in the TAA group. Additionally, ileal aspirate *E. coli* counts and BT frequency in this group were significantly higher than in the controls. These findings were harmonious with our previous studies.^{23,24}

The *Lycium barbarum* has long been recognized in traditional Chinese medicine for various therapeutic properties based on its antioxidant and immune-modulating effects.²⁵ *Lycium barbarum* contains very important constituents such as carotenoids, polysaccharides, vitamins, and flavonoids.²⁶ In our study, *Lycium barbarum* powder was extracted with four solvents consecutively. There was no special reason for choosing these solvents and this method. This method is simple and easy. Strong antioxidant properties of *Lycium barbarum* have been reported in many studies.^{27,28} Also, it has been shown that *Lycium barbarum* prevents liver damage in various damage models.^{29,30} In contrast to above studies, in our study, *Lycium barbarum*

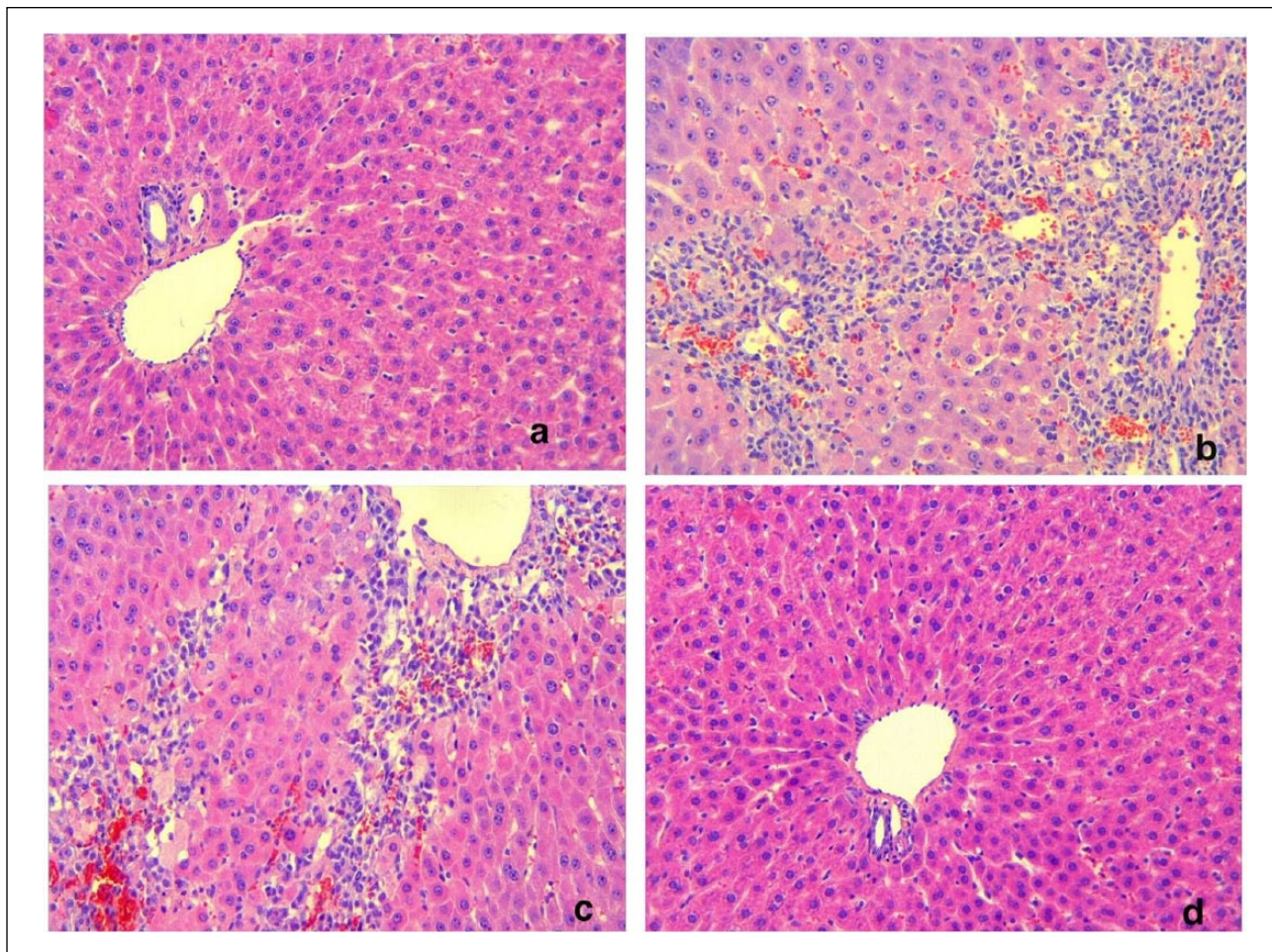


Figure 1. Liver histology in the control animals (a), TAA group (b), TAA+ LB group (c), and the LB group (d) (Hematoxylin and eosin, $\times 20$). Bridging necrosis and inflammatory cell infiltration in the liver parenchyma area was noted in (b) and (c).

Table 4. Comparison of intestinal mucosal integrity, edema, inflammatory cellular infiltration of the lamina propria, and vasodilation scores between the groups.

| Groups | MI | Edema | INF | V |
|------------------|------------------|------------------|------------------|------------------|
| Control (n = 7) | 0.00 \pm 0.00 | 0.00 \pm 0.00 | 0.00 \pm 0.00 | 0.00 \pm 0.00 |
| TAA (n = 6) | 2.33 \pm 0.52* | 1.50 \pm 0.55* | 2.17 \pm 0.41* | 1.67 \pm 0.52* |
| TAA+Goji (n = 5) | 0.80 \pm 0.84† | 0.40 \pm 0.55† | 1.00 \pm 0.71† | 0.80 \pm 0.45† |
| Goji (n = 7) | 0.00 \pm 0.00 | 0.00 \pm 0.00 | 0.00 \pm 0.00 | 0.00 \pm 0.00 |

* $P < 0.0001$ compared with the control group.

† $P < 0.001$ compared with the TAA group.

Values are given as mean \pm SD.

INF, inflammatory cellular infiltration of the lamina propria; MI, mucosal integrity; V, vasodilation.

treatment did not attenuate liver damage (Figure 1c). Serum ALT levels in the TAA + LB group were higher than in the TAA group ($P < 0.05$). Liver TBARS levels in the TAA + LB group were significantly lower than in the TAA group ($P < 0.01$). Liver GSH levels in the TAA + LB group were higher than in the TAA group but the difference was not

significant. No study to date has reported the effects of *Lycium barbarum* in thioacetamide-induced liver injury in rats. Wang et al. reported that *Lycium barbarum* aggravated liver injury by increasing hydroxyl radical release in a liver ischemia/reperfusion model.³¹ Also, it has been reported that hydroxyl radicals play a direct role

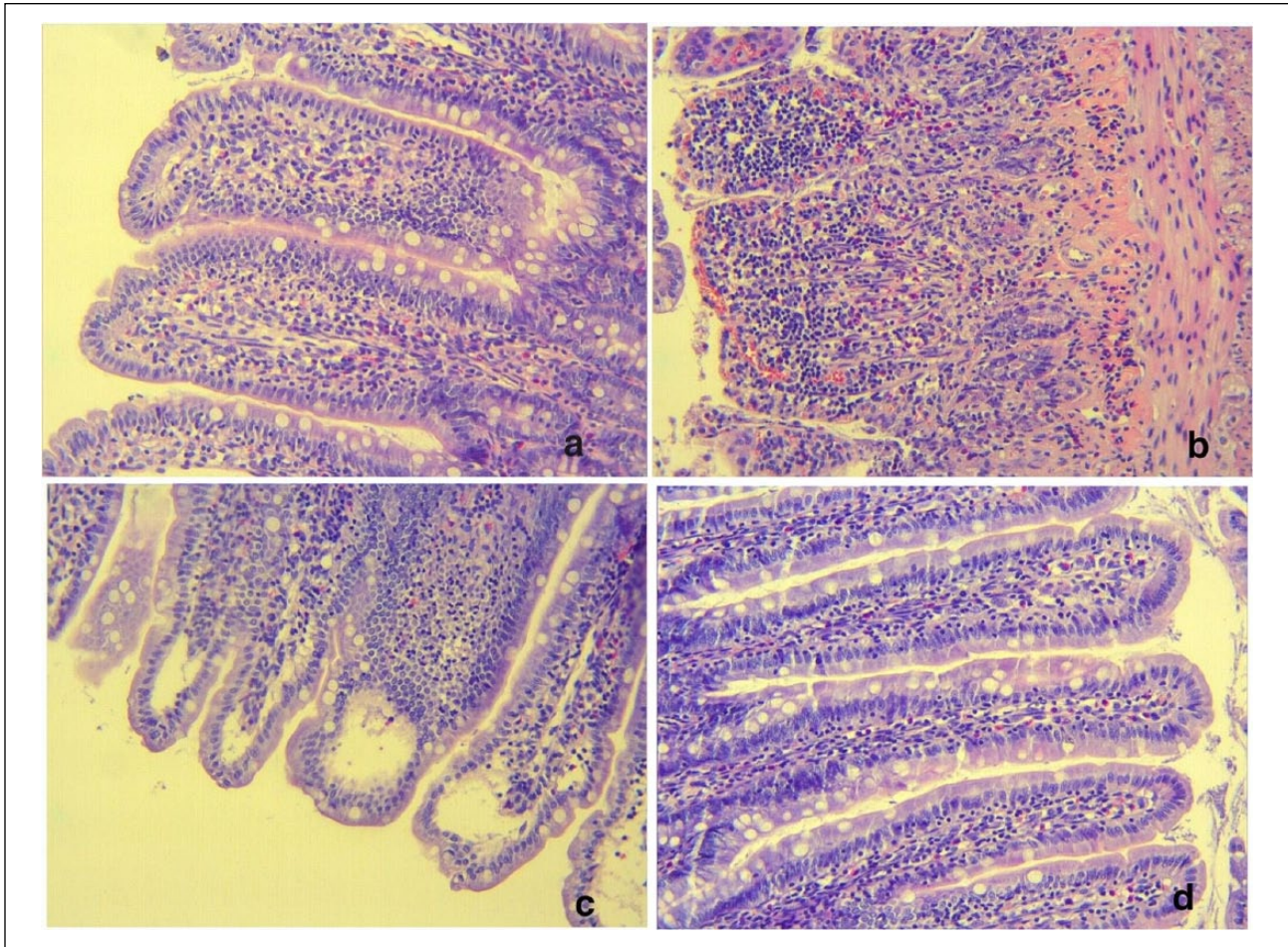


Figure 2. Intestinal histology of the control animals (a), the TAA group (b), the TAA+LB group (c), the LB group (d) (Hematoxylin and eosin, $\times 20$). Villous blunting, degeneration of surface epithelium and inflammatory cell infiltration was noted in (b). (c) Minimally inflammatory cell infiltration in the lamina propria. Also, height of the villi was normal, surface epithelium was shapely and uninterrupted. Marked lacteal dilation in the apical region of villi was noted.

Table 5. *E. coli* count ($\times 10^3$ CFU/mL) in ileal aspirates and frequency of BT by group.

| Groups | <i>E. coli</i> count | BT frequency (%) |
|------------------|--------------------------------|-------------------------|
| Control (n = 7) | 19.60 \pm 18.79 | 0/5 (0) |
| TAA (n = 6) | 83.33 \pm 25.82* | 5/6 (83.3) [†] |
| TAA+Goji (n = 5) | 36.00 \pm 35.07 [‡] | 3/5 (60) |
| Goji (n = 7) | 25.00 \pm 35.33 | 0/7 (0) |

* $P < 0.01$ compared with the control group.

[†] $P < 0.05$ compared with the control group.

[‡] $P < 0.05$ compared with the TAA group.

in the induction of liver damage in the TAA model.³² Therefore, these data suggest that *Lycium barbarum* may aggravate the extent of liver injury by increasing hydroxyl radical release in this model.

In this study, *Lycium barbarum* treatment significantly improved intestinal damage in the TAA-induced liver injury model (Figure 2c). We observed

that inflammatory infiltration significantly reduced in this group. Intestine TBARS levels in the TAA group were higher than in the control group, but this difference was not significant. However, intestine TBARS levels in the TAA + LB group were significantly lower than in the TAA group ($P < 0.05$). Various *in vivo* and *in vitro* studies have demonstrated the efficacy of *Lycium barbarum* and identified *Lycium barbarum* polysaccharides (LBP) as the major active antioxidants that protect against various peroxidation-related conditions, including lipid peroxidation.³³ LBP may exert their beneficial effects in other ways, such as acting as bioactive fibers or prebiotics, by contributing to the synthesis and release of antioxidants by probiotic bacteria and inhibiting inflammation.^{26,33,34} In this study, *Lycium barbarum* treatment evidently attenuated intestinal damage on the contrary liver damage. In the light of

these data, our results suggest that interaction between *Lycium barbarum* and intestinal flora provides an important contribution to its antioxidant and anti-inflammatory effect in the intestine.

It has been shown that intestinal bacterial overgrowth plays an important role in BT in the TAA-induced hepatic failure model.³⁵ In our study, *E. coli* counts in ileal aspirate in the TAA group were significantly higher than in the controls ($P < 0.01$). In the TAA group, the BT rate was 83.3% and the species of bacteria translocated to MLN, liver, and spleen was *E. coli*. These findings support the notion that IBO plays an important role in the development of BT. It has been reported that intestinal oxidative damage is related to IBO.³⁶ Counts of *E. coli* in ileal aspirate were significantly higher in the TAA group than in the controls ($P < 0.01$). Also, increased intestinal TBARS levels and severe intestinal damage accompanied the IBO in this group. In the TAA + LB group, ileal aspirate *E. coli* counts were significantly lower than in the TAA group ($P < 0.05$). In addition, decreased intestinal TBARS levels and histological scores were observed in this group. These results support the idea that intestinal oxidative stress is related to IBO in this model. Interaction between *Lycium barbarum* and intestinal flora may be another responsible factor for decreased ileal *E. coli* counts in the TAA + LB group.

Bacterial translocation (BT) includes the migration of viable microorganisms but also all microbial products across an even, anatomically intact intestinal barrier from the intestinal lumen to mesenteric lymph nodes (MLN) and other extraintestinal organs and sites. IBO, increased intestinal permeability, and impaired immunity are main factors in development of BT.³⁷ We previously have reported that intestinal oxidative damage plays a major role in the development of BT by disrupting the barrier function of intestinal mucosa in TAA-induced liver injury.²³ Intestinal TBARS levels in the TAA group were higher than in the control group, but difference was not significant. Intestinal GSH levels in the same group were significantly lower than in the control group ($P < 0.05$). These findings were harmonious with our previously studies. BT frequency (60%) in the TAA + LB group were lower than in the TAA group (83.3%), but this difference was not significant. In spite of decreased ileal *E. coli* counts, intestinal TBARS levels and damage in the TAA + LB group, high

BT frequency in this group may be related to ongoing severe liver damage. Because the liver is the lymphoid organ with an overwhelming innate immune system, it functions as a filter organ at the first line between the digestive tract and the rest of the body, receiving 80% of the blood supply through the portal vein.³⁸ Reticuloendothelial system (RES) depression plays an important role in the development of bacterial translocation. Also, the presence of RES depression has been reported in various liver injury models.^{39,40} In the present study, RES depression may also be another factor that contributes for BT development.

In conclusion, *Lycium barbarum* treatment decreased ileal *E. coli* counts and intestinal damage but it did not alter BT frequency. Despite all these favorable effects of *Lycium barbarum*, its insufficiency in the prevention of BT may be related to ongoing severe liver damage in this model.

Declaration of conflicting interests

The authors declared no potential conflicts of interest with respect to the research, authorship, and/or publication of this article.

Funding

This research received no specific grant from any funding agency in the public, commercial, or not-for-profit sectors.

References

1. Wiest R and Garcia-Tsao G (2005) Bacterial translocation (BT) in cirrhosis. *Hepatology* 41: 422–433.
2. Nakao A, Taki S, Yasui M et al. (1994) The fate of intravenously injected endotoxin in normal rats and in rats with liver failure. *Hepatology* 19: 1251–1256.
3. Seo YS and Shah VH (2012) The role of gut-liver axis in the pathogenesis of liver cirrhosis and portal hypertension. *Clinical and Molecular Hepatology* 18: 337–346.
4. Pinzone MR, Celesia BM, Di Rosa M et al. (2012) Microbial translocation in chronic liver diseases. *International Journal of Microbiology* 2012: 694–629.
5. Xin YF, Wan LL, Peng JL et al. (2011) Alleviation of the acute doxorubicin-induced cardiotoxicity by *Lycium barbarum* polysaccharides through the suppression of oxidative stress. *Food and Chemical Toxicology* 49: 259–264.
6. Jin M, Huang Q, Zhao K et al. (2013) Biological activities and potential health benefit effects of polysaccharides isolated from *Lycium barbarum*. *International Journal of Biological Macromolecules* 54: 16–23.

7. Shan X, Zhou J, Ma T et al. (2011) Lycium barbarum polysaccharides reduce exercise-induced oxidative stress. *International Journal of Molecular Sciences* 12: 1081–1088.
8. Cui B, Liu S, Lin X et al. (2011) Effects of Lycium barbarum aqueous and ethanol extracts on high-fat-diet induced oxidative stress in rat liver tissue. *Molecules* 16: 9116–9128.
9. Chen Z, Kwong Huat Tan B and Chan SH (2008) Activation of T lymphocytes by polysaccharide-protein complex from Lycium barbarum. *International Immunopharmacology* 8: 1663–1671.
10. Chen Z, Lu J, Srinivasan N et al. (2009) Polysaccharide-protein complex from Lycium barbarum L. is a novel stimulus of dendritic cell immunogenicity. *Journal of Immunology* 182: 3503–3509.
11. Chen Z, Soo MY, Srinivasan N et al. (2009) Activation of macrophages by polysaccharide-protein complex from Lycium barbarum L. *Phytotherapy Research* 23: 1116–1122.
12. Zhang XR., Zhou WX, Zhang YX et al. (2011) Macrophages, rather than T and B cells are principal immunostimulatory target cells of Lycium barbarum L. polysaccharide LBP4-OL. *Journal of Ethnopharmacology* 136: 465–472.
13. Cheng D and Kong H (2011) The effect of Lycium barbarum polysaccharide on alcohol-induced oxidative stress in rats. *Molecules* 16: 2542–2550.
14. Bruck R, Aeed H and Avni Y (2004) Melatonin inhibits nuclear factor kappa B activation and oxidative stress and protects against thioacetamide induced liver damage in rats. *Journal of Hepatology* 40: 86–93.
15. Ganzera M, Zhao J and Khan IA (2001) Analysis of terpenelactones in Ginkgo biloba by high performance liquid chromatography and evaporative light scattering detection. *Chemical & Pharmaceutical Bulletin* 49: 1170–1173.
16. Song MK, Salam NK, Roufogalis BD et al. (2011) Lycium barbarum (Lycium barbarum) extracts and its taurine component inhibit PPAR- γ -dependent gene transcription in human retinal pigment epithelial cells: Possible implications for diabetic retinopathy treatment. *Biochemical Pharmacology* 82(9): 1209–1218.
17. Xin YF, Zhou GL, Deng ZY et al. (2007) Protective effect of Lycium barbarum on doxorubicin-induced cardiotoxicity. *Phytotherapy Research* 21: 1020–1024.
18. Cetinkaya Z, Ulger H, Akkus MA et al. (2002) Influence of some substances on bacterial translocation in the rat. *World Journal of Surgery* 26: 9–12.
19. Searle PL (1984) The Berthelot or indophenol reaction and its use in the analytical chemistry of nitrogen – a review. *Analyst* 109: 549–568.
20. Buege JA and Aust SD (1978) Microsomal lipid peroxidation. *Methods in Enzymology* 52: 302–310.
21. Ellman GL (1959) Tissue sulfhydryl groups. *Archives of Biochemistry and Biophysics* 82: 70–77.
22. Guarner C, Runyon BA, Young S et al. (1997) Intestinal bacterial overgrowth and bacterial translocation in cirrhotic rats with ascites. *Journal of Hepatology* 26: 1372–1378.
23. Harputluoglu MM, Demirel U, Gul M et al. (2012) Effects of rifaximin on bacterial translocation in thioacetamide-induced liver injury in rats. *Inflammation* 35: 1512–1517.
24. Harputluoglu MM, Demirel U, Karadag N et al. (2006) The effects of Ginkgo biloba, vitamin E and melatonin on bacterial translocation in thioacetamide-induced fulminant hepatic failure in rats. *Acta Gastroenterologica Belgica* 69: 268–275.
25. Reeve VE, Allanson M, Arun SJ et al. (2010) Mice drinking Lycium barbarum juice (Lycium barbarum) are protected from UV radiation-induced skin damage via antioxidant pathways. *Photochemical & Photobiological Sciences* 9: 601–607.
26. Potterat O (2010) Goji (Lycium barbarum and L. chinense): Phytochemistry, pharmacology and safety in the perspective of traditional uses and recent popularity. *Planta Medica* 76: 7–19.
27. Li XM, Ma YL and Liu XJ (2007) Effect of the Lycium barbarum polysaccharides on age-related oxidative stress in aged mice. *Journal of Ethnopharmacology* 111: 504–511.
28. Li XM (2007) Protective effect of Lycium barbarum polysaccharides on streptozotocin-induced oxidative stress in rats. *International Journal of Biological Macromolecules* 40: 461–465.
29. Xiao J, Liong EC, Ching YP et al. (2012) Lycium barbarum polysaccharides protect mice liver from carbon tetrachloride-induced oxidative stress and necroinflammation. *Journal of Ethnopharmacology* 139: 462–470.
30. Wu PS, Wu SJ, Tsai YH et al. (2011) Hot water extracted Lycium barbarum and Rehmannia glutinosa inhibit liver inflammation and fibrosis in rats. *American Journal of Chinese Medicine* 39: 1173–1191.
31. Wang NT, Lin HI, Yeh DY et al. (2009) Effects of the antioxidants lycium barbarum and ascorbic acid on reperfusion liver injury in rats. *Transplantation Proceedings* 41: 4110–4113.
32. Bruck R, Aeed H, Shirin H et al. (1999) The hydroxyl radical scavengers dimethylsulfoxide and dimethylthiourea protect rats against thioacetamide-induced fulminant hepatic failure. *Journal of Hepatology* 31: 27–38.
33. Amagase H, Sun B and Borek C (2009) Lycium barbarum (goji) juice improves in vivo antioxidant

- biomarkers in serum of healthy adults. *Nutrition Research* 29: 19–25.
34. Bengmark S and Gil A (2006) Bioecological and nutritional control of disease: prebiotics, probiotics and synbiotics. *Nutricion Hospitalaria* 21: 72–84, 73–86.
 35. Yi JH, Ni RY, Luo DD et al. (1999) Intestinal flora translocation and overgrowth in upper gastrointestinal tract induced by hepatic failure. *World Journal of Gastroenterology* 5: 327–329.
 36. Chiva M, Soriano G, Rochat I et al. (2002) Effect of *Lactobacillus johnsonii* La1 and antioxidants on intestinal flora and bacterial translocation in rats with experimental cirrhosis. *Journal of Hepatology* 37: 456–462.
 37. Benten D and Wiest R (2012) Gut microbiome and intestinal barrier failure—the “Achilles heel” in hepatology? *Journal of Hepatology* 56: 1221–1223.
 38. Chen Y and Sun R (2011) Toll-like receptors in acute liver injury and regeneration. *International Immunopharmacology* 11: 1433–1441.
 39. Greve JW, Gouma DJ, Soeters PB et al. (1990) Suppression of cellular immunity in obstructive jaundice is caused by endotoxins: a study with germ-free rats. *Gastroenterology* 98: 478–485.
 40. Van Leeuwen PA, Hong RW, Rounds JD et al. (1991) Hepatic failure and coma after liver resection is reversed by manipulation of gut contents: the role of endotoxin. *Surgery* 110: 169–175.